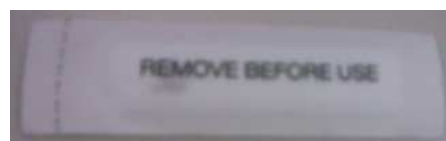
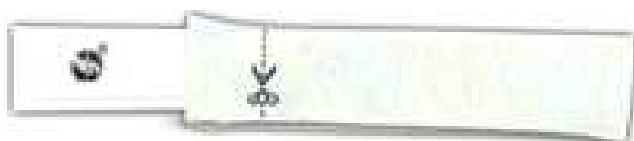


## Placement guidelines – Disposable Anti Theft Soft Tags

### Placement Guidelines – Disposable Anti-Theft Tags – Soft tags

- The following placement guidelines apply to disposable anti-theft tags (soft tags- fabric, paper and plastic) that are deactivated at point-of-sale and generally removed by the consumer.
- The preferred placement location for disposable anti-theft tags is within a 3-inch (7.62 cm) radius of the bar code symbology placement. This placement ensures successful bar code scanning and, at the same time, successful deactivation of the anti-theft tag.
- Placement within a 3-inch (7.62cm) radius of the bar code may not be convenient or conducive for fabric (sewn-on) anti-theft tags. An alternate placement location for these anti-theft tags is within a 3-inch (7.62cm) radius of the sewn-in care or content label.

(Note: Graphics of products shown here are not actual size)



- DR Security label encased in material sew in label – Soft tags examples

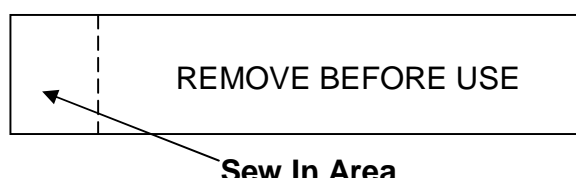
## How to handle Disposable Anti Theft Soft Tags

- Security label **should not** be bent or folded.
- If tags are damaged during manufacturing process, they should be replaced prior to shipping.
- Sew label onto garment **AFTER ALL** treatments are complete to avoid damage to security label. For example don't sew on security label before dying or washing.
- Sew on solution should not to be used on children's clothing.
- Warning information should be visible on each tag with the approved tolerances.

## Recommended Sewing Instructions for Soft Goods Sew-on Security Tags

### Recommended sewing instructions

| STITCH TYPE                                | REQUIREMENT  |
|--|--|
| Single Needle                              | 6 – 7 stitches per inch, single needle<br><b>Back-tacking is required</b><br>1/8 inch sewing allowance |
| Overlock Safety Stitch(4 thread) / Serging | 12 – 13 Stitches per inch,<br>4 thread serging machine preferred.                                      |



### NOTE:

#### For One Side Printed:

Please ensure the warning print is on the top side when sewing onto garment. Print will be "REMOVE BEFORE USE" or "Remove before wearing and washing"

#### For Two Sides Printed

For two sides printed the Custom print is to be on the top side when sewing onto the garment  
The warning print is to be on the bottom side of the label

### Apparel Sew in label tagging guidelines

| PRODUCT  | GUIDELINES   |
|--|--|
| Unwashed Tops & Bottoms<br>(e.g. knits, woven, outerwear, blazers) | Attach behind care label during the manufacturing process                                  |
| Washed Garments/ Dyed Garments<br>(e.g. knits, woven tops)         | Attach on or beside care label <b>AFTER</b> washed/dyed/ finishing processes               |
| Washed / Dyed Bottoms  | Attach <b>AFTER</b> wash/dyed processes 4inches from top of band – wearer's left side seam |