

DUNE^{4WD}

DOUBLE BURNER BUTANE STOVE WITH HOTPLATE

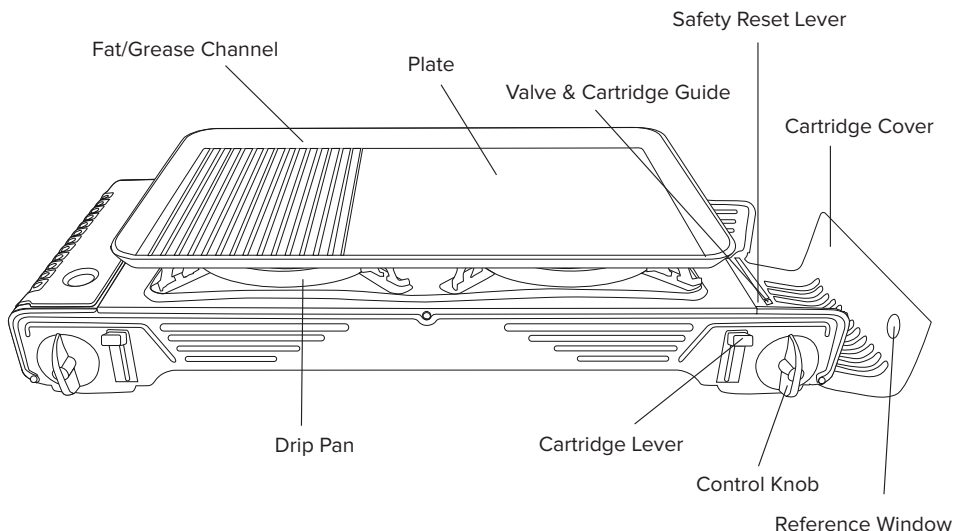
OPERATING INSTRUCTIONS



WARNING: FOR OUTDOOR USE ONLY
AN2240SP



- Improper installation, adjustment, alteration, service or maintenance can cause property damage, injury or death. DO NOT modify this appliance.
- **WARNING:** Accessible parts may be very hot. Keep young children away at all times.
- Do not move the appliance during use.
- **Important. Read these instructions for use carefully.**
- **Familiarise yourself with the appliance before connecting it to its gas cartridge. Keep these instructions for future reference. ONLY USE IN WELL-VENTILATED AREAS**



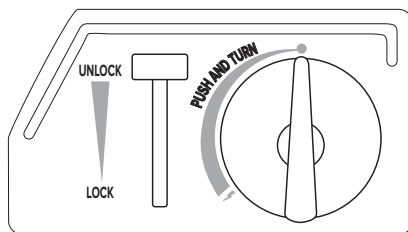
Before first use, remove all packaging from the stove and read these instructions completely.

OPERATING INSTRUCTIONS

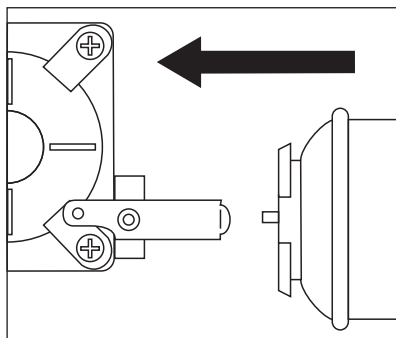
Each burner requires an individual cartridge to operate. The left hand burner operates from a cartridge situated in the left hand cartridge bay and the right hand burner operates from a cartridge situated in the right hand cartridge bay. The following instructions are written for an individual side as this can be used independently. The operator is to ensure that the instructions are correctly applied to each side of the appliance.

HOW TO INSTALL A GAS CARTRIDGE

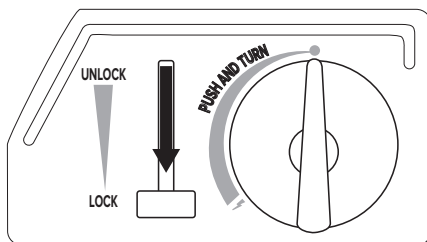
1. Turn the control knob to the OFF position. Make sure that the cartridge lever is in the UNLOCK position. If the gas knob is in the ON position the cartridge cannot be put into position.



2. Open the cartridge cover and insert the gas cartridge. Make sure that the cartridge slot fits into the cartridge lever guide on the valve inside the stove.
(Caution: Use only approved butane gas cartridge UL147B or EN417)

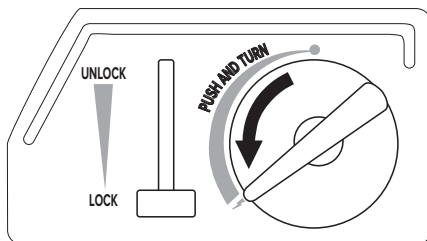


- When you are ready to use the stove, push the cartridge lever down to the FUEL-LOCK position. If a hissing sound or gas smell is evident, check that cartridge is fitted correctly. Repeat step 2 to stop the gas leakage. **If lever is hard to push down, do not force it. Check that the cartridge is fitted correctly and the control is in the OFF position.**



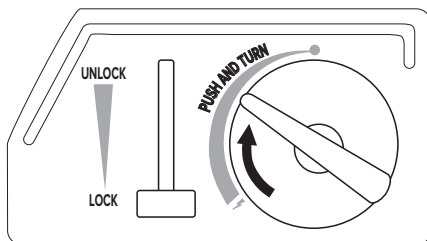
IGNITION:

- Push the control knob in and turn the control knob towards the IGNITION position until a click is heard from the piezo ignitor.
- If ignition fails, turn the control knob back to the OFF position and repeat.



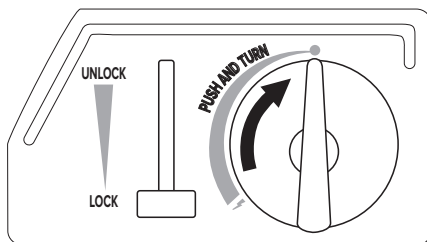
HEAT CONTROL:

The control knob can be turned to adjust the flame output. Adjust it to the suitable position for cooking.

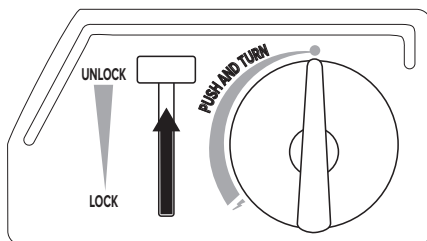


EXTINGUISHING:

- Turn the control knob to the OFF position. Confirm that the flame is completely extinguished.



- Raise the cartridge lever to the UNLOCK position, and take out the gas cartridge when the stove is not in use.



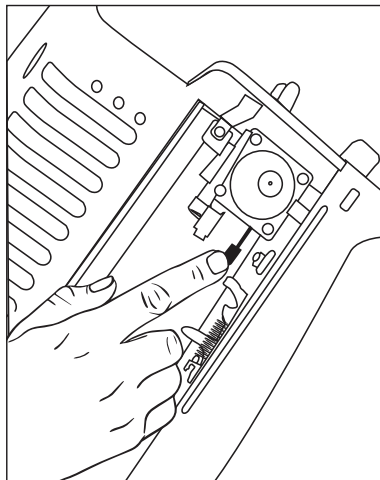
WARNING!!

- Do not store cartridge in stove during transportation or storage.
- Replace the nozzle cap back onto the cartridge to protect nozzle and avoid accidental gas leakage if nozzle is bumped or depressed.
- Avoid boil overs and spillage.
- During use parts may become very hot. Keep young children away.
- Allow to cool before moving or handling.
- Do not use as a space heater.
- Do not use for any purpose other than cooking.
- Do not operate stove in the carry case.
- Caution: Never obstruct the air openings or vents on this appliance.

HOW TO RESET THE SAFETY SHUT OFF

If the stove is used in a hot area such as outdoors in direct sunlight or incorrectly the cartridge will become hot and the pressure inside the cartridge will increase. If the pressure approaches a dangerous level the safety device will activate by ejecting the cartridge. If the ejection mechanism fails, this stove features a secondary safety shut off which can be reset by pushing the lever. If either of these safety devices activate, your method of use is causing the cartridge to overheat. Be responsible and only use this stove safely, as described in these instructions.

It may be necessary to open the control knob to release the pressure before another canister can be installed into the stove.



PRECAUTIONS

GAS CARTRIDGE:

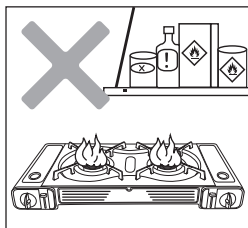
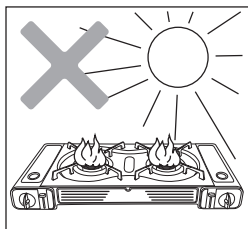
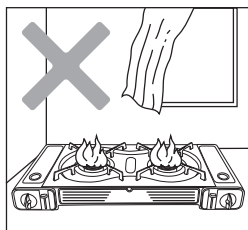
1. This appliance shall only be used with a butane cartridge certified to UL147B or EN417
IT MAY BE HAZARDOUS TO ATTEMPT TO FIT OTHER TYPES OF GAS CARTRIDGES.
2. The cartridge should be placed away from flammable products or direct sunlight.
Never keep cartridge in places where the temperature is over 50°C.
3. Do not subject the cartridge to impact or rough handling.
4. Cartridges must be stored outdoors in a well ventilated location out of reach of children.
5. Do not puncture or incinerate empty cartridge.
6. Avoid carrying cartridge in the boot of a car or any unventilated enclosure.
7. Gas cartridges shall be changed in a well ventilated location, preferably outside, away from people and any sources of ignition such as naked flames, electric heaters/equipment.
8. To check if gas cartridge contains gas, disconnect from the stove, then hold upright and shake from side to side. If you can feel or hear liquid movement, it contains gas

STOVE:

1. Check the seals between the appliance and the gas cartridge are in place and in good condition before connecting the gas cartridge.
2. Do not use this appliance if it has damaged or worn seals.
3. Do not use this appliance if it is leaking, damaged or does not operate properly.
4. Do not try to detect leaks using a flame.
5. This appliance must only be serviced by an authorised person.
6. Do not modify this appliance.

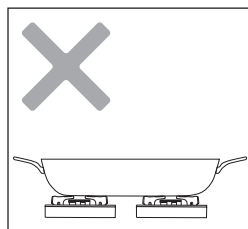
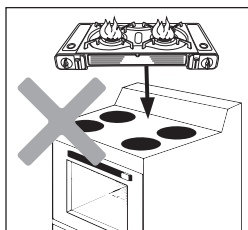
USE:

1. Do not use for any purpose other than cooking. Incorrect use may result in overheating, incomplete combustion and/or a risk of fire or explosion.
2. DO NOT USE THIS STOVE TO LIGHT briquettes or heat beads.
3. In the event of a gas leak (smell of gas) immediately turn the control to the off position and move the cartridge lever to the unlock position to isolate the gas supply.
4. Do not move the appliance during operation.
5. When the cooking plate is removed, the maximum sized vessel (pot or pan) to be used on this stove is 26.5cm diameter.



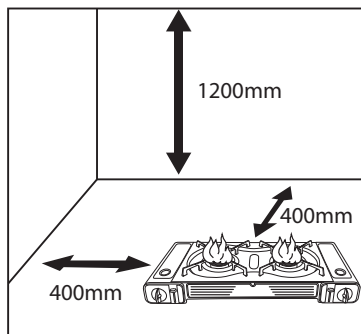
Cooking on the Non-stick plate

1. Wash the cooking plate before the first use.
2. The hotplate reaches cooking temperature very quickly. To prevent damage to your cooking plate, do not preheat the plate for an excessive period.
3. Take care when cooking to avoid scratching the cooking surface with utensils.
4. Prevent fat fires. Never allow the fat/grease channel to overflow.
5. When you are finished cooking, turn off the burners and allow the hotplate to cool down before packing away. Do not splash the hotplate suddenly with water while hot, this may cause the hotplate to warp.
6. To fix a warped hotplate, place it back on the stove with both burners on high for 30 seconds before the plate is allowed to cool. It may return back to the original shape.
7. After each use, clean food residue from the cooking cooking plate with a non-scratch type sponge to prevent corrosive damage to the cooking surface.



PLACEMENT:

1. Do not use the stove in very windy conditions.
2. Do not place or use this appliance on any hot surface.
3. Do not use the stove under overhanging shelves etc.
4. Do not use close to combustible materials such as curtains. No combustible materials should be within 400mm from any side of the stove and 1200mm above.
5. Use stove in the shade or in cool places. Avoid using in direct sunlight.
6. Only operate this appliance on a flat horizontal surface and ensure the aeration opening below the stove is clear and unobstructed.
7. **CARBON MONOXIDE HAZARD -**
USING THIS APPLIANCE IN AN ENCLOSED SPACE MAY CAUSE DEATH. DO NOT USE IN CARAVANS, TENTS, MARINE CRAFT, CARS, MOBILE HOMES OR SIMILAR LOCATIONS.



ABNORMAL OPERATION

Abnormal operation can be identified by:

- Frequent activation of pressure safety device
- Jamming of cartridge lock lever
- Irregular burner flame which is yellow or unstable
- Black sooting of cooking utensils

Refer to the trouble shooting section of this manual for possible solutions.
If the stove does not operate properly DO NOT use the appliance.

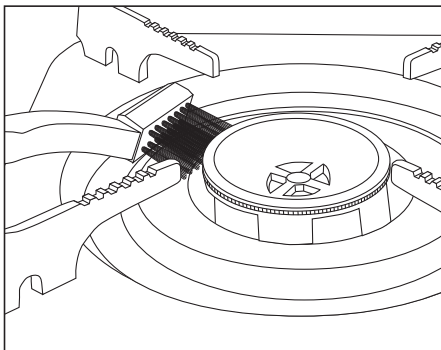
MAINTENANCE

PRECAUTIONS:

1. Make sure that the gas cartridge is released before cleaning.
2. Never remove safety devices or gas components.

CLEANING:

1. Body: Wipe off with a clean cloth. When necessary, use a kitchen cleanser and then finish with a dry cloth.
2. Pan support and drip pan: After washing, wipe with a dry cloth.
3. Burner: Clean the burner top and the burner ports with a hard brush making sure that all food particles are removed from the burner ports.



TROUBLE SHOOTING

<div> <div>PROBLEM</div> <div>CAUSE</div> </div>	No ignition	No burning	Unstable flame	Uneven flame	Slow burning	Gas smell	Flame extinguishes during use	SOLUTION
Lack of fuel	●	●			●		●	Renew cartridge
Spark point dirty	●							Carefully remove dirt
Dirty burner	●	●	●	●	●			Clean the burner
Imperfect cartridge alignment	●	●	●		●	●		Realign cartridge
Use of unsuitable fuel	●	●	●	●	●			Replace with cartridge containing correct fuel
Internal gas pressure too high							●	Cool down gas cartridge
Functioning of safety stop mechanism	●						●	Check and reset mechanism
Improper setting of spark point	●							Set spark point to 2mm away from burner

If you are still experiencing difficulty with the appliance after trying the above solutions, the appliance should not be used until it has been inspected and repaired by a suitably qualified person.

SPECIFICATIONS

Model No.	AN2240SP
Ignition Method	Piezo-Electric
Dimensions	678mm (W) x 285mm (D) x 128mm (H)
Weight	3.3kg
Safety Device	1. Canister ejection 2. Gas shut off
Fuel Consumption	165g/h (nominal per burner)
Gas Type	Butane (2 Cartridges)
Injector Size	0.6mm
AGA Approved No.	8630



12 MONTH WARRANTY

This product is guaranteed to be free from defects in workmanship & materials for a period of 12 months from date of purchase.

The product will be replaced or refunded for a major failure. The product will be repaired or replaced at our discretion should the product fail to be of an acceptable quality and failure is not a major failure.

Warranty will not apply if the product (a) is damaged through misuse (including failure to maintain), neglect, accident or ordinary wear & tear (including rust, corrosion & normal fading, weathering, staining, discolouration, scratching or chipping); (b) is damaged through exposure to heat; (c) is used commercially; (d) has not been used or installed in accordance with any applicable instruction; or (e) has been modified, repaired or tampered with by the purchaser or an unauthorised service person.

Our goods come with guarantees that cannot be excluded under the Australian Consumer Law. You are entitled to a replacement or refund for a major failure and for compensation for any other reasonably foreseeable loss or damage. You are also entitled to have the goods repaired or replaced if the goods fail to be of acceptable quality and the failure does not amount to a major failure.

To claim under this warranty, take this product to any Anaconda store where you purchased it. You will need your receipt or other proof of purchase. Additional information may be requested of you to process your claim. Should you not be able to provide proof of purchase with a receipt; a bank or credit card statement, and identification showing your name, address and signature may be required to process your claim.

Any expense relating to the return of the product to the store will be at the cost of the customer. For online purchases, please contact us to arrange where and how to return the product.

To obtain compensation, you would need to provide documentary evidence of the loss or damage suffered, and documentary evidence that such loss or damage was a reasonably foreseeable consequence of a failure. Such evidence may include photographs, statutory declarations, receipts, reports (e.g. from your doctor), depending on the loss or damage.

The benefits given by this warranty are in addition to other rights and remedies under the Australian Consumer Law in relation to the goods and services to which this warranty relates.

Warranty excludes consumable replacement/serviceable parts.

This warranty is provided by
Anaconda Group Pty Ltd (ABN 53 955 173 782).
Level Six
111 Cecil Street
South Melbourne VIC 3205
www.anaconda.com.au
Ph: 1300 558 990